

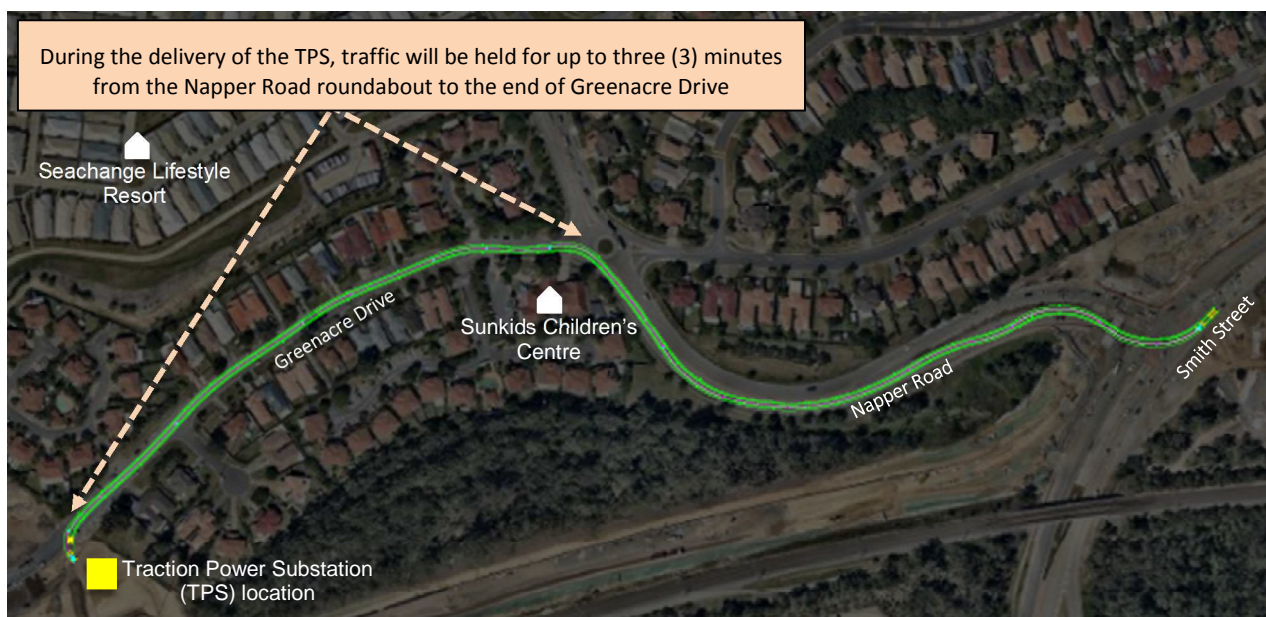


Works Notification

May 2017

Gold Coast Light Rail Stage 2

SUBSTATION DELIVERY, END OF GREENACRE DRIVE - PARKWOOD



On Tuesday 23 May 2017, a single delivery of a pre-assembled Traction Power Substation (TPS) will occur along Napper Road and Greenacre Drive between 4:00am and 5:00am.

Due to the width of the vehicle required to deliver the TPS, traffic between the Napper Road roundabout and the end of Greenacre Drive will have to be held for up to three (3) minutes.

When the TPS arrives, pilot vehicles and traffic control will temporarily hold traffic for the safety of motorists and to allow the oversized vehicle to safely drive from the Napper Road roundabout into site.

Residents and road users need to be aware that following traffic control directions is vital for their safety.

Work will involve:

- Pilot vehicles and traffic control will be on site while the TPS delivery takes place.
- Pedestrian and residential access will be maintained and not affected.
- Heavy machinery including crane and truck movements will be required.

What to expect

- Delivery will occur between 4:00am and 5:00am when oversized vehicles are allowed to travel on state roads. The vehicle leave site after 9:30am.
- Traffic will be held for up to three (3) minutes while the oversized vehicle drives from the Napper Road roundabout to the end of Greenacre Drive.
- Light vehicle movements within the project corridor.

Due to the width of the oversized load, residents who park on Greenacre Drive are asked to ensure their vehicles sit inside the solid white road shoulder line.

Every effort will be made to keep disruption to a minimum for residents and road users. We appreciate your patience during these important works and will continue to update you as work progresses.

About Traction Power Substations

The overhead wires on the Gold Coast Light Rail Stage 2 are energised at 750 volts supplied from four Traction Power Substations (TPS). The TPS are located along the 7.3-kilometre route at Helensvale, Greenacre Drive, Uplands Drive and the corner of Wintergreen Drive and Olsen Avenue.

TPS buildings are approximately 12 metres long, 4.4 metres wide and 4 metres high and are designed to be unobtrusive and landscaping elements to be installed prior to project completion. Power is delivered to the overhead wires via feeder cables that run from the TPS' conduits and pits. The power then travels up the inside of the overhead line poles, out across the cantilevers and onto the overhead contact wires.

Contact the project team



If you have any questions or would like to register for more information, please contact the CPB Contractors Project Team on **1800 425 799*** or email **gclrstage2@cpbcon.com.au**. Visit **www.gclrstage2.com.au** anytime for more information and updates.

** Free call within Australia. Call charges may apply from mobile or pay phones.*

Subscribing to receive project updates is a convenient way to obtain information about the project and work happening in your area. To subscribe, simply visit our website and look for the 'sign up form' on the 'contact' page.

Project information

Gold Coast Light Rail Stage 2 involves the design and construction of a new 7.3km route which runs from Helensvale heavy rail station adjacent to the Gold Coast Line, then adjacent to the Smith Street Motorway to connect with Stage 1 at the Gold Coast University Hospital light rail station.

GoldlinQ's construction contractor CPB Contractors commenced construction in July 2016 and are committed to completing the project in time for the Gold Coast 2018 Commonwealth Games.



Australian Government

BUILDING OUR FUTURE

CITY OF
GOLD COAST

GoldlinQ
Gold Coast Light Rail



Queensland Government