



Works Notification

October 2016

Gold Coast Light Rail Stage 2

UPDATE: ROCK REMOVAL ON THE UPLANDS DRIVE HILL- PARKWOOD



As previously advised in September 2016, CPB Contractors has commenced rock cutting activities along Smith Street and the Smith Street Motorway.

Starting, Monday 31 October 2016 sections of the Uplands Drive hill adjacent to the Smith Street Motorway will be reduced over the coming months by approximately 18 metres to reach the required level to construct the light rail.

Work will involve

- Removal of vegetation along the rock face prior to each section of rock cutting activities.
- The terrain leveller will cut away approximately two metres of rock from the hill every two weeks. For safety reasons, the terrain leveller cannot operate close to the edge of the hill near the Motorway, leaving a section of rock that needs to be removed by a trench machine.
- An excavator will remove the remaining section of rock from the edge of the hill. This activity can take up to three nights to complete the two metre section of rock removal. This work must be undertaken at night when traffic volumes are at their lowest.
- Once the required sections of rock have been removed, soil nails and shotcreting (a sprayed concrete finish) will take place on the rock face before removal of vegetation and the next two metre section of rock commences.

Night work

Night work will occur intermittently for the next four (4) months between 8.00pm and 6.00am, weather and site conditions permitting. Work will include:

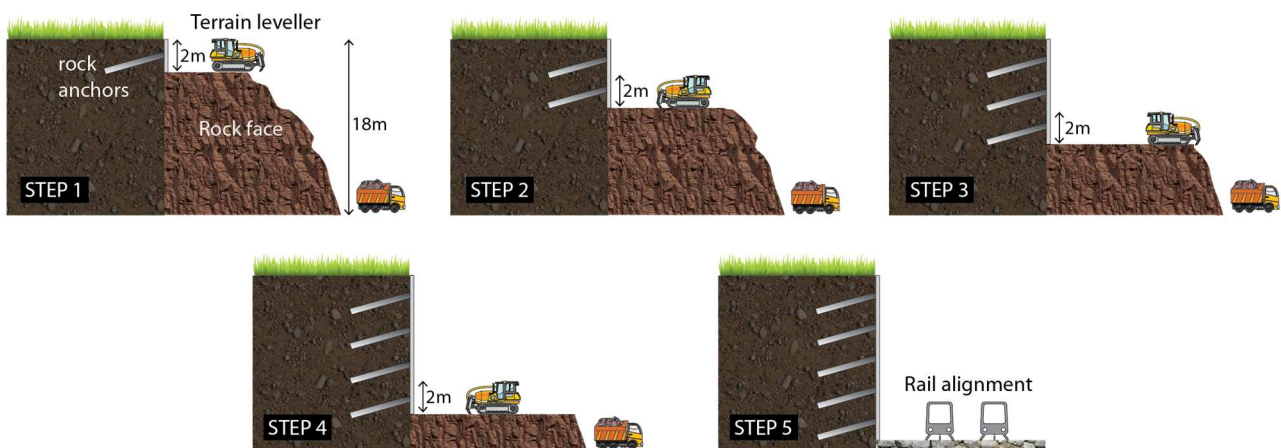
- Temporary eastbound lane closures along Smith Street Motorway. One lane will remain open to traffic.
- Excavator, dozer and grader working along the edge of the Uplands Drive hill to remove vegetation.
- Rock removal activities with the use of an excavator and vehicle access into the corridor.
- Mobile lighting towers to light the work area.

What to expect

During construction, you may notice some changes around your local area such as:

- Increased noise levels and vibration from machinery.
- Increased construction vehicle movements within the project corridor.
- Dust associated with construction activities, water trucks are onsite to minimise dust.

Every effort will be made to keep disruption to a minimum for residents in close proximity to this work. We appreciate your patience during these important works and will continue to update you as work progresses.



Contact the project team



If you have any questions or would like to register for more information, please contact the CPB Contractors Project Team on **1800 425 799*** or email **gclrstage2@cpbcon.com.au**. Visit **www.gclrstage2.com.au** anytime for more information and updates.

** Free call within Australia. Call charges may apply from mobile or pay phones.*

Subscribing to receive project updates is a convenient way to obtain information about the project and work happening in your area. To subscribe, simply visit our website and look for the 'sign up form' on the 'contact' page.

Project information

Gold Coast Light Rail Stage 2 involves the design and construction of a new 7.3km route which runs from Helensvale heavy rail station adjacent to the Gold Coast Line, then adjacent to the Smith Street Motorway to connect with Stage 1 at the Gold Coast University Hospital light rail station.

GoldLinQ's construction contractor CPB Contractors commenced construction in July 2016 and are committed to completing the project in time for the Gold Coast 2018 Commonwealth Games.



Australian Government

BUILDING OUR FUTURE

CITY OF
GOLDCOAST™

GoldlinQ
Gold Coast Light Rail



Queensland Government