

CONSTRUCTION NOTICE

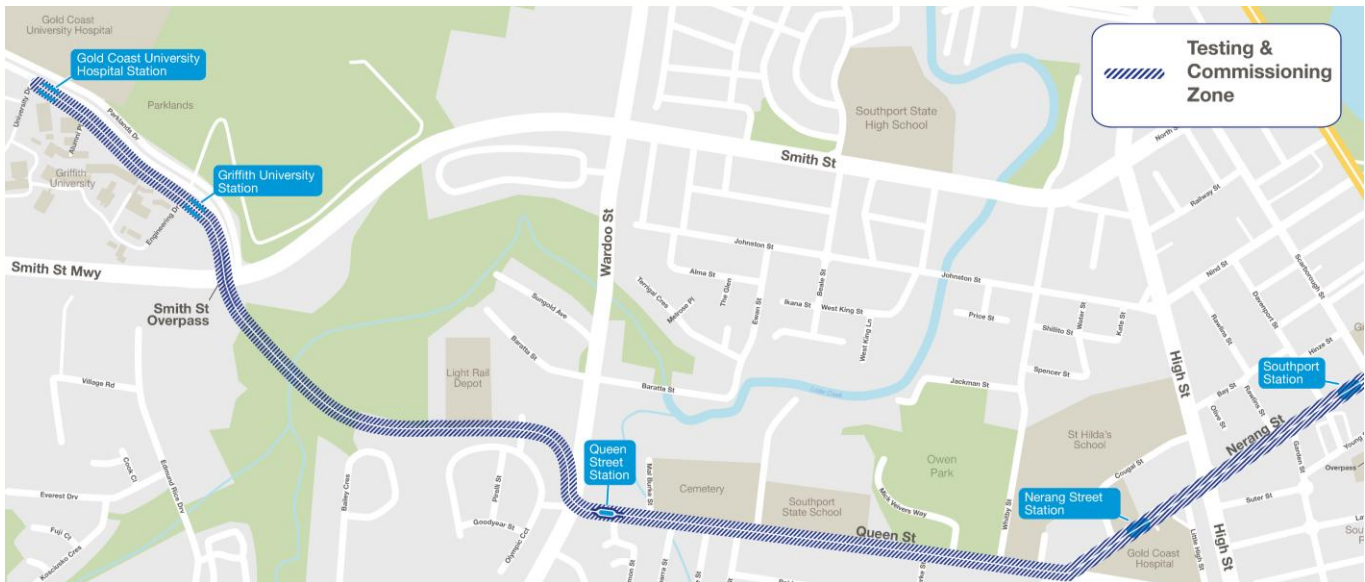
October 2013

G:link

Tram movements in Southport

From late October 2013 tram movements and testing will extend to include the area from the light rail Depot to the Gold Coast University Hospital Station (see map).

Overhead wires are now live in this area and tram movements can be expected to occur at anytime. Remember to obey all signs, signals and road rules and you will be safe at all times.



Overhead wires are live and tram movements will occur within the testing and commissioning zone.

Stay safe

- Always follow the current Queensland road rules around the light rail system. Most importantly remember that U-Turns are only legal where there is a sign indicating U-Turn Permitted.
- New signs and traffic signals will be installed to remind motorists and pedestrians they are now travelling alongside a light rail service (see overleaf for details).
- Remember tracks are for trams. When driving only cross the tracks at designated intersections and never queue on the tracks.
- Never walk drive or cycle along the tracks and always cross at designated pedestrian crossings.
- Trams run on electricity supplied by live overhead wires. Look up and see the danger.
- When cycling always obey the road rules, cross at designated crossings and cross the tram tracks at a right angle.
- Listen out for the 'ding ding' as tram drivers will sound the bell if they see pedestrians or motorists putting themselves in danger.



Keep up-to-date with the progress of Queensland's first light rail and to sign up for updates visit www.goldlink.com.au or call the project hotline on 1800 967 377*

*Free call within Australia. Call charges may apply from mobile phones and payphones.



Australian Government

CITY OF
GOLD COAST



Queensland Government

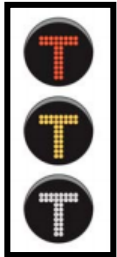
CONSTRUCTION NOTICE

October 2013

G:link

New traffic signs

In addition to seeing trams on the streets a number of new traffic signs are being introduced. Below is an example of some of the new signs you can expect to see across the city.



'T' traffic lights: These traffic lights are for trams only. If you see a red 'T' you don't have to stop, this is instructing the tram to stop. A white 'T' is instructing the tram to go.



Keep Tracks Clear: Vehicles should not queue across tracks as a tram may approach. Look out for this sign at intersections where there is yellow crosshatching marked on the road.



Watch For Trams: This sign will be in place at different crossing points to let people know there may be trams moving in the vicinity.



No Stopping On Tramway: Vehicles should not stop on tram tracks or within the hazard zone. There will be no boom gates on the light rail system.

Stay alert

Trams are designed to be quiet and may not be heard against everyday background noise.

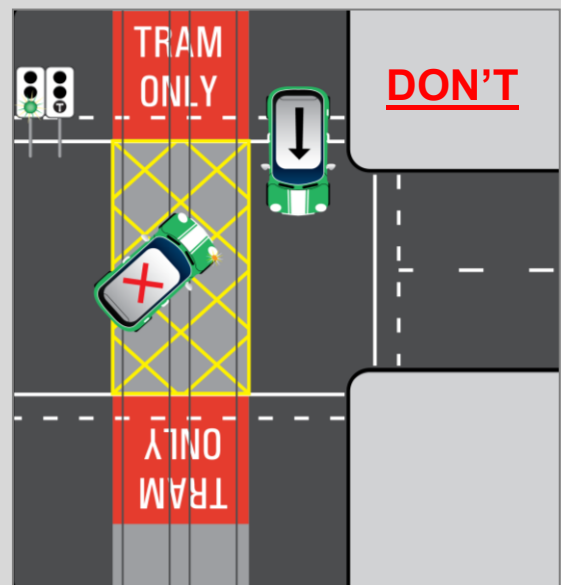
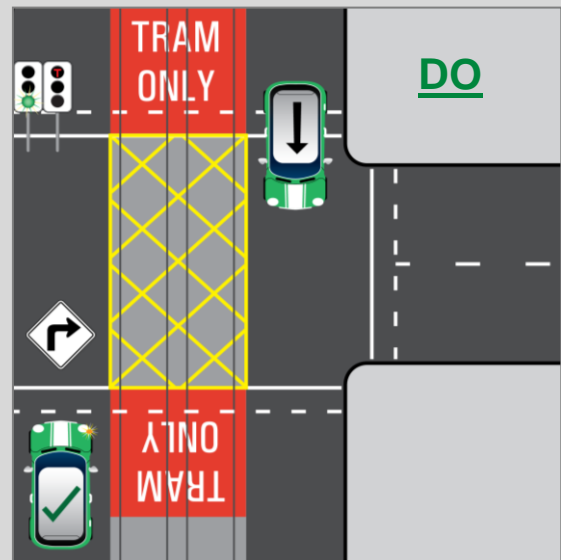
Pedestrians will need to stay alert around the light rail corridor and not be distracted by mobile phones or headphones.

Look and listen for trams and always cross the road and tram tracks at designated pedestrian crossings.

Don't stop on the tram tracks!

If turning at a green light remain in the traffic lane until other vehicles have passed and watch for trams in both directions. Do not wait on the tracks for cars to pass.

It is safe to turn on a green arrow and remember to only U-Turn where a U-Turn Permitted sign is displayed.



Keep up-to-date with the progress of Queensland's first light rail and to sign up for updates visit www.goldlink.com.au or call the project hotline on 1800 967 377*

*Free call within Australia. Call charges may apply from mobile phones and payphones.



Australian Government

CITY OF
GOLDCOAST.



Queensland Government